

The Parish of Louth



**ANNUAL REPORT OF THE
PAROCHIAL CHURCH COUNCIL OF
THE PARISH OF LOUTH FOR 2013**

**Presented to the Annual Parochial Church
Meeting on 29th April 2014**

Introduction

This report concerns the activities of the Church of England within the parish of Louth during 2013. Having arrived early in the year, 2013 has (for me) been a time to discover the variety of church life that is present in Louth, to enjoy participating in it, and to discover where we might be called in the future. This report records some of the changes that have perforce already happened, but also presents some of the fruits of people's reflections on the life to which the Church might be called in future years in the town of Louth – and how the Districts that go to make up the Parish of Louth contribute their distinctive part to this story. This is by no means a finished product of deep reflection – merely the first efforts at seeking to find out where God is calling us.

As I wrote last year – I pray that the more we listen, the more deeply we may understand God's call on our lives; a call that will shape the journey we travel together as pilgrim members of the body of Christ.

The Rev'd Nick Brown, Priest-in-charge, Team Parish of Louth

Reference and administrative information

This is the annual report for the activities of The Parochial Church Council for the Parish of Louth (the 'PCC') for the year from 1st January to 31st December 2013.

The churches and chapels in the parish are:

- The Parish Church of All Saints, South Elkington
- The Parish Church of St. Andrew, Stewton
- The Parish Church of St. James, Westgate, Louth
- The Parish Church of St. Martin, Welton-le-Wold
- The Parish Church of St. Michael, Church Street, Louth
- Trinity Centre, Eastgate, Louth (incorporating the Chapel of Holy Trinity, Louth)

The address for official correspondence for the PCC is: c/o The Deanery Office, 6 Ugate, Louth LN11 9ET.

The bankers to the PCC are: Lloyds Bank, Mercer Row, Louth.

The following people have been members of the PCC during the period being reported:

Licensed clergy: The Reverend Nick Brown (from 10th January 2013)
 The Reverend Steve Johnson (from 10th January 2013)
 The Reverend Robert Mansfield
 The Reverend Keith Tomlin
 The Reverend Lorraine Turner

Readers: Dr Paul Hill
 Mrs Ronnie Partridge
 Mrs Sylvia Pounds (from 12th October 2013)

Churchwardens: Ms Eileen Byrne
 Mr Jim Cave
 Mr Paul Clifford (until 2013 APCM)
 Mr Charles Dobson
 Mr Robert Haynes
 Mr Brian Luckwell
 Mrs Dorothy Mansfield
 Mr John Myers
 Mr John Troughton (from 2013 APCM)
 Mrs Maria Vincent
 Mr David Wormald

Deanery Synod: Mrs Margaret Anderson
 Mrs Jill Day
 Mrs Mary Haynes
 Dr Tony Hill (**Lay vice-chair**)
 Mrs Joyce Leighton
 Mrs Pru Wormell

General Synod:	Mrs Sylvia Pounds
Elected Members:	Mr Robert Frankum Mr Alan John (until 2013 APCM) Mrs Pat Neal (from 2013 APCM) Mrs Jane Rushby Mrs Kim Thompson (from 2013 APCM) Mr Peter Taylor Mr John Troughton (until 2013 APCM)
Co-opted:	Mr Mike Crosby (Treasurer) Mrs Jennifer Goodwin (Secretary) Mrs Peta Hill (Community Worker) (until 31 st August 2013)

In the normal course of events the day-to-day activities of the PCC are delegated to the appropriate Churchwardens, DCCs or PCC officers who work alongside the various members of the Ministry Team serving the parish.

Structure, governance and management

The Parochial Church Council of the Parish of Louth is a corporate body established by the Church of England. The PCC operates under the Parochial Church Council Powers Measure. The PCC exceeds the limits for exemption from registering with the Charity Commission, and is therefore registered under the name of 'The Parochial Church Council of the Ecclesiastical Parish of Louth' (Charity No. 1132658). The geographical parish which the PCC of the Parish of Louth serves is coterminous with that which is served by the Parish of Louth Team Ministry, which was established by a Scheme made under the Pastoral Measure 1968 in 1974.

The appointment of PCC members is governed by and set out in the Church Representation Rules, under which a scheme has been drawn up for the representation of five districts within the parish. In line with these provisions, membership of the PCC is provided for as follows:

Ex officio members of the PCC:

- All ordained and lay ministers licensed within the parish
- 2 Churchwardens for each of the 5 districts within the Parish
- Representatives to Deanery Synod (the maximum number is decided by Diocesan Synod)
- Any member of Diocesan Synod or the General Synod entitled to be a member

Elected members of the PCC:

- One member per hundred electors (or part thereof) within each district

Co-opted members of the PCC:

- The PCC is entitled to co-opt additional members up to one fifth of the number of elected members.

On appointment/election, members of the PCC are informed of their status as charity trustees and the broad remit of their responsibilities both under church and charity law. PCC members are informed, via the PCC Secretary, of training opportunities provided by the diocese.

As is legally required, the PCC has a Standing Committee that comprises the Priest-in-charge, two Parish Wardens (elected by, and from among, the churchwardens), the lay vice-chair of the PCC, the secretary of the PCC, the treasurer of the PCC, and three ordinary members of the PCC (elected by the PCC). The Standing Committee has the power to transact business on behalf of the PCC between its meetings. In addition to the Standing Committee the following groups have powers delegated to them as described:

District Church Councils for each of the five parish churches have powers delegated under a scheme established in 1995 and are responsible, through their Churchwardens and PCC representatives, to the PCC for the life of the church in the districts for which they are responsible. Their activities are outlined in the individual reports for each District that are attached as annexes to this report.

Trinity Centre Sub-committee, established by resolution of the PCC in 2011, which is responsible for the maintenance of the building and provision of ecclesiastical services in Trinity Centre that were formerly the responsibility of the Holy Trinity District Church Council. It also manages the separate funds of the various community outreach programmes.

Finance Sub-committee, established by resolution of the PCC in 2011, to identify and implement the changes to reporting made necessary by the change from exempted to registered charitable status. After a deal of work at enabling the consolidation of accounts during 2012 there has been less work for this group in 2013, particularly given the uncertain direction of overall financial strategy within the Diocese as a whole. Now that this is

becoming clearer the group plans to meet again to consider how we may best respond to the significant changes that are likely to take place in the way the mission and ministry of the Church is funded locally.

Valuing people Sub-committee, established by resolution of the PCC in 2011, to review employment and volunteering practices and recommend best practice to the PCC and DCCs in these areas. The work of this group was concluded with the approval of a series of documents and policies by the PCC in July 2013. If subsequent reviews of PCC policies lead to further work it will be reconstituted.

Discipleship Sub-committee, established by resolution of the PCC in 2011, to identify ways in which people might be encouraged to explore their faith in more depth and recommend possible developments to the PCC/Ministry Team. This committee met to discuss and agree an outline programme of activities and to discuss the possibility of a Baptism Partner Scheme. Both of these have subsequently been taken forward.

Faith in action Sub-committee, established by resolution of the PCC in 2011, to explore ways of enabling greater outreach beyond the walls of the church both at home and abroad and recommend possible developments to the PCC/Ministry Team. This committee ceased to meet during the vacancy.

Objectives and activities

The primary object of the PCC is ‘the promotion of the Gospel of our Lord Jesus Christ according to the doctrines and practices of the Church of England’. In doing so it ‘co-operates with the minister in promoting in the parish the whole mission of the Church, pastoral, evangelistic, social and ecumenical’.¹

The PCC has held four ordinary meetings during the year (February, May, September and November) and a further two short meetings to discuss the lifting of the suspension of presentation to the benefice and the relicensing of the Rev’d Nick Brown as Team Rector to the Parish of Louth.

The year saw overall attendances across the parish grow. In addition a new congregation, Messy Church, has been established on a monthly basis catering for the spiritual needs of families with young children. This congregation now includes a regular attendance of between 55 and 60 people of all ages and brings together existing members of congregations from across the parish (and other churches in the town) together with those who were previously not engaged in such a way with the Christian story.

None of this work would be possible without the enormous contribution made by so many people; both seen and unseen. To these people, some listed in various places in this report, but many not; thanks for all that is done both in our common life as a Church and in our individual lives in the wider world. Where each of us walks, there Christ may be seen!

The following offers a summary of attendance trends during the past year:

	2013	2012	5yr average
Usual weekly Sunday attendance	135	116	-
Usual weekly Weekday attendance	16	12	-
Usual monthly Fresh Expression attendance (Messy Church)	57	0	-
Christmas attendance	1,536	1,131	-
Christmas communicants	317	325	-
Easter attendance	329	315	-
Easter communicants	255	233	-
Total attendance at services on Sundays and Festivals	-	-	-
Baptisms	58	56	-
Weddings	28	32	-
Funerals	94	98	-

Looking ahead, there are clear challenges as we seek not just to maintain the life of the Church, but to grow the kingdom of God. Some of these challenges are to do with the inner life of the church – such as addressing the structural deficits that can be identified in the accounts for St James’ and the central PCC accounts. Whilst not urgent yet, these are

¹PCC (Powers) Measure 1956.

matters that need addressing before they do become critical, and impact on the ministry of the Church. More importantly, there are challenges that face us in serving those in need within our community, and providing opportunities for people (in our congregations and beyond them) to grow more deeply as followers of Christ. The 'Healthy Churches' exercise that took place over the summer months reinforced the areas of focus identified in the Parish Profile compiled during 2012, that there needs to be an increased focus on 'seeking what God wants' and being 'energised [in our work] by faith'.

These areas for the work of the PCC in the coming year draw not only on the exercises that have taken place within the parish, but also need to respond to the wider context of the strategic possibilities offered by the changes taking place in the Diocese of Lincoln at large.

Financial review

The PCC is responsible for the direct management of accounts relating to those expenses that are parish-wide in nature, and also holds reserves (both restricted and unrestricted). In addition to these directly managed funds, the PCC is responsible for those funds that are managed at a local level by the five DCCs and the Trinity Centre Committee. Again, most of these funds include a mixture of revenue and reserve accounts; some having significant sums invested in reserves.

Accounts are prepared in line with the Church Accounting Regulations 2006, which mandate compliance with the Statement of Recommended Practice issued by the Charity Commission under the Charities Act 1993. Currently, the accounts of each District are presented and adopted at the Annual District Meeting and the accounts relating solely to the PCC are presented for adoption at the Annual Parochial Church Meeting. These accounts are subsequently consolidated.

During the year the PCC looked to develop reserves and investment policies and, whilst this work is ongoing, the following statements represent current policy in these areas:

Reserves Policy: The PCC holds reserves to cover peaks and troughs in income and expenditure, to protect against uncertainties in future income and to deliver future charitable activities. The Parish Treasurer will review reserves with DCC Treasurers on an annual basis to ensure adequate cover for planned activities and to identify future risks for the PCC.

Investment Policy: The PCC holds investments through The Central Board of Finance (CBF) Church of England Funds managed by CCLA Investment Management Limited, deposit accounts including The CBF Church of England Deposit Fund and UK banks, and current accounts with UK banks. The Parish Treasurer will review the detail of the investments with DCC Treasurers on an annual basis and confirm the institutions and investments acceptable to the PCC for any investments.

Funds held as custodian trustees on behalf of others

Trinity Centre undertakes a number of activities that serve the wider mission of the Church to the local community. The assets of these various projects are held in trust by the PCC, and managed on their behalf by the Trinity Centre Sub-Committee of the PCC. Each project held in trust is accounted for as a separate designated/restricted fund within the Trinity Centre accounts.

ANNEX A: Report on the work of the Ministry Team in the Parish of Louth

Staffing/Membership

The first event to shape the pattern of ministry in the Parish during the year was the arrival in January of The Rev'ds Nick Brown and Steve Johnson (as Priest-in-charge and Community Chaplain respectively). With the Team Ministry suspended the oversight of ministry in the Parish was undertaken by the Priest-in-charge, but in practice this has been shared with the Community Chaplain in anticipation of the Team Ministry being reinstated during 2014.

During the year there were a number of other changes in the team serving the Parish and working for the wider Church in the community. Early in the year there were two changes in the staff working from Trinity Centre with Ian Miles replacing Heather in February as Centre Administrator in February and Jayne Pegg taking over from Polly Aron as Projects Administrator in April.

At the end of August we wished Peta Hill well with her future work for the Lincolnshire Carers and Young Carers Partnership and gave thanks for the significant engagement with the wider community that has taken place during her time leading the Parish's community work. Whilst much of this work in the Parish was maintained by the team at Trinity Centre, there was a hiatus in some of the wider work Peta undertook during the Autumn, and her replacement (Greg Gilbert) will be working to pick this work up as we move into 2014.

In the Autumn we also welcomed two members to the formal ministry of the Team with Sally Heavens joining as a Reader-in-training and Sylvia Pounds being licensed as a Reader having completed her training. Looking to the future, during the Autumn the Priest-in-charge worked with the Diocesan Director of Ordinands to identify Kate Toogood, currently completing the first part of her training, who will take up the post of Assistant Curate at the end of June 2014. We can also anticipate another Assistant Curate being appointed to serve their Title Post in Louth from June 2015.

Discipleship and Spirituality

During the year a Healthy Churches exercise was undertaken by the PCC (with a chance for members of the congregations to join in during the summer of 2013). The full results were made available to the PCC at their February Meeting but reinforced the assessment made in the 2012 Parish Profile that Discipleship and Spirituality were areas that we need to invest time and energy into if we are to grow as a 'healthy' Christian community. During the year the Ministry Team have worked to explore what this might mean in practice and have tried out a number of different activities, including:

- Lent sermon series and study sessions for Lent 2013
- Wedding Preparation
- Group of young adults (20s/30s)
- Baptism Partners Scheme
- A Bible Reading Group which has spent some time exploring the Gospel of Matthew informally
- One off events, including:
 - Film evening: 'Amor'
 - Exploring Poverty
 - Exploring Matthew
- Planning 'Pilgrim' groups meeting from Lent to Pentecost 2014

An initial programme of events was reviewed by members of the Discipleship Sub-Committee in September 2013 and a programme of activities for Autumn/Winter 2013 was drawn up. The Discipleship Sub-Committee will review these activities again at six monthly intervals to provide a forum for wider consultation. Taken together these developments are a sign that we are making progress with the aspiration stated in the 2012 Parish Profile and laying foundations for God's work among us in the time to come.

Outreach and Community work

Much of the work of the Ministry Team takes place beyond the confines of Sunday services and provides the opportunity to witness to God's love in the wider community – both explicitly and just by being present alongside others.

Civic Chaplaincy

Within the parish, links have been maintained with the work of the Town Council with regular attendance at its meetings and various civic functions. The Rev'd Nick Brown has served as Mayor's Chaplain to both mayors

serving during 2013, taking over from the Rev'd Ian Chisholm as Chaplain when he arrived in January. As well as this work within the Parish of Louth, the Rev'd Nick Brown has a responsibility (with others in the Ministry Team) for representing the Deanery of Louthesk in appropriate ways to East Lindsey District Council. At a local level this has included attendance at the Louth Area Committee and engagement with Council Officers and Councillors on ways in which the local authority and Church can more easily co-operate when there is common cause (and indeed find mechanisms for communicating when there are issues of concern). During 2013 there was some discussion on engaging a broad range of councillors and church representatives, but this failed to gain support but has resulted in discussions of ways of moving forward. A regular part of this aspect of work has been attending the Louth Area Committee – a body that brings together elected representatives from Town, District and County layers of local government. We have also participated in a number of other groups within and associated with the local authority, including the Quality of Life Network, the EL Strategic health and Wellbeing Partnership and groups looking at the 'Ageing Better' proposal. In addition to this broad approach to chaplaincy, this year has seen the Rev'd Nick Brown also hold the role of Chaplain to the Chairman of the Council (Cllr Mrs Pauline Watson) and in this capacity has attended a number of Council Meetings and other functions, and led the annual Civic Service for the District Council (held this year in St James').

Trinity Centre

The work that takes place in and from the Trinity Centre is a key part of our work in engaging with the wider community – please see the separate report on this in Annex G

Children and Young People

Our work with Children and Young People in the wider community has seen some significant development during the course of the year, with a Parent and Toddler Group starting at Church House and Messy Church at Trinity Centre being launched in late Spring, and Tinies Breakfast starting at St Michael's in the autumn. In addition there have been regular activities available for young children in the Children's Corner at St James ('Craft in the Corner') and plans have been made for a Sunday Creche at the Rectory to begin after Easter 2014.

Primary Schools

As a Church School, St Michael's has spaces for four Governors and at the moment three of these positions are taken by Mrs Janet Kee, Mrs Jane Fletcher and the Rev'd Steve Johnson. Scott Norwood Witts has been proposed for the fourth, currently vacant position. Clergy are involved in occasional assemblies and the school visits St Michael's regularly for its termly services. Steve Johnson also sits as a Governor at Kidgate School where there are weekly assemblies involving the church. Kidgate School have also made a number of visits to worship in St James' during the year. There have been a number of 'one-off' events involving Lacey Gardens School, including a very successful project on financial awareness in school and inter-generational activities at Trinity Centre. During the 2013/14 academic year members of the Ministry Team are also going to go in to the school to assist in occasional acts of collective worship. The existing links between South Elkington and Greenwich House School have been developed with some visits by members of the Ministry Team to the school.

Secondary schools

The strong historic links between St James' and King Edward VI Grammar School continue to be nurtured, with regular acts of worship in the church and regular contact between members of the Ministry Team and the school community. Together, we are looking at ways in which the two institutions might work together to mutual advantage in the future. Links with Cordeaux Academy are also important, and the school has used St James' for several events during the course of the year. During the 2013/14 academic year we will be working together to see where the church might be able to contribute to the life of the school – both in academic and broader terms.

Hospital, Hospice and Care Homes

The Rev'd Lorraine Turner served as a sessional Chaplain at Louth Hospital until the autumn of 2013 and since then has focused this aspect of her work on chaplaincy to the Hospice. The Rev'ds Nick Brown and Steve Johnson are in the process of joining the rota of duty chaplains available to the Hospital, and are also available as on-call chaplains to the Hospice's 'Hospice at Home' scheme. Our ministry to Care Homes has been refreshed and now involved the Rev'ds Nick Brown and Steve Johnson with Sylvia Pounds visiting a number of homes, supported by a group of volunteers who join them on their visits. At the moment there are regular visits to Stewton House, The Wolds Care Home, The Elms and The Beeches.

Contribution to the wider Church (beyond Parish and Deanery)

The Rev'd Nick Brown is a member of the House of Clergy of the Diocesan Synod and also offers time to the Diocese to undertake Ministry Development Reviews. In the coming year he will also be contributing to the training of those in IME4-7. During the course of the year the Rev'd Nick Brown continued as a member of the Priest Theologians Network convened by the Bishop of Worcester on behalf of the Archbishop of Canterbury, and periodically attends a series of Seminars that take place at Westminster Abbey on a wide range of themes. He has also maintained informal links with colleagues working within the Anglican Church of Aotearoa (New Zealand).

The Rev'd Steve Johnson is also involved as a Reviewer for Ministry Development Reviews, and is a member of the Diocesan Board of Education and provides support to church schools where this is supportive of their work.

Mrs Sylvia Pounds is a member of the General Synod of the Church of England and was asked by the Bishop of Lincoln to be a delegate at the annual Readers Conference.

Future developments

As we move in to 2014 we are fortunate to have a large and varied team of Ministers growing into a Ministry Team that seeks to serve the needs both of the gathered church and the wider community. As well as consolidating this development and taking forward its natural development, there are challenges ahead to grow broader patterns of ministry that make a reality of the aspiration to see 'ministry' not just as the work of a core Ministry Team, but to find ways to recognise fully those taking forward the Church's ministry in each District, and in the wider networks which we all belong to in society in our daily lives.

ANNEX B: Report on the work of the DCC of the Parish Church of St. Andrew, Stewton

Members of the DCC and Church Officers within the District serving following the 2013 Annual Meetings

Clergy/Ministers	The Rev'd Nick Brown (from 10 th January 2013) The Rev'd Steve Johnson (from 10 th January 2013) The Rev'd Robert Mansfield
Churchwardens	Dorothy Mansfield Eileen Byrne
Deanery Synod	Joyce Leighton
PCC member	Jane Rushby (Secretary)

Activities of the DCC

Apart from the Annual District Meeting, there have been no formal meetings of the DCC for Stewton during the year – the business being conducted by the Churchwardens (with informal consultation with other officers and members of the congregation). There have been various routine matters related to the fabric of the building and the church regarding the fabric of the church have been directed toward fundraising for the proposed free-standing toilet in the churchyard.

The life of the Church in the District

Routine worship at St Andrew's is focused on the fortnightly service of Holy Communion that takes place on alternate Sunday mornings. In addition to these services there have also been a number of funerals or interments take place at Stewton during the year, together with a baptism and a wedding. There have been a number of special events including:

- the 'Stewton Day' in early summer;
- the Heritage Weekend in September;
- Harvest Festival, when the morning service was replaced by an afternoon Harvest Service; and
- the Christmas Carol Service (which like-wise took the place of a morning service).

I have been here a year, and it is a joy to make the trip down Stewton Lane to the tranquil spot where Christ has been worshipped for centuries (and where I pray he will continue to be present for centuries to come). Although, with the exception of Harvest (when a visit to A&E intervened). I have been able to attend all of these special occasions (as well as a number of regular services through the year) the normal pastoral care of the congregation is in the hands of Robert Mansfield, who writes:

It has been a very active 12 months here at St Andrew's with our Summer Open Day attracting 300+ people and a further 120+ on the Lincolnshire Heritage Day as well as 45+ hikers arriving for a talk and Afternoon Tea as part of the Wolds Walking Festival in June 2013. More recently the Palm Court Tea filled Holy Trinity in Louth to overflowing and while we

don't like to turn people away we do not know where we would place any additional people.

There would also appear to be a great deal of media interest in our toilet project with an interview, while at the Lincolnshire Show, by Radio Lincolnshire and a further one by Grimsby Evening Telegraph and Louth Target who wanted to know why a toilet had not been included when the church was built. I pointed out that a thousand years ago building a toilet was not a high priority!

Our contacts with Kenya and Romania remain strong and it is vital that no matter what pressures are on our resources here we continue to maintain our concern for the people who have little or nothing.

Our practice of contact and informal pastoral visiting continues to ensure a continuing involvement with those who are unable to attend here so they still feel part of the community at St Andrew's. Small working parties continue to be a feature of coping with the endless tasks which occur even in a small church like ours.

The provision of refreshments after each service enables people to talk to the priest and each other rather than making a hasty retreat following the blessing. We feel this is an important part of our philosophy of welcoming all and everybody.

It is pleasing to see that the life of the Church in Stewton thrives, and to give thanks for the work that those who worship here put into growing the body of Christ not just here but in the wider parish and Church – contributing to many activities across our local community.

Statistics for 2013

	2013	2012	5yr average
Usual Sunday attendance (fortnightly)	22	18	-
Christmas attendance	22	25	-
Christmas communicants	19	21	-
Easter attendance	24	35	-
Easter communicants	22	25	-
Baptisms	1	-	-
Weddings	1	-	-
Funerals	2	3	-

ANNEX C: Report on the work of the DCC of the Parish Church of St. James, Louth

Members of the DCC and Church Officers within the District serving following the 2013 Annual Meetings:

Clergy/Ministers	The Rev'd Nick Brown (from 10 th January 2013) The Rev'd Steve Johnson (from 10 th January 2013) Dr Paul Hill Mrs Ronnie Partridge Mrs Sylvia Pounds (from 12 th October 2013)
Churchwardens	Robert Haynes John Troughton
Deanery Synod	Margaret Anderson Mary Haynes (Electoral Roll Officer) Tony Hill (Asst Churchwarden)
PCC members	Pat Neal (Secretary) Kim Thompson (Sacristan)
DCC members	Kate Clarke (Verger) Jane Fletcher (Asst Churchwarden) Lisa Taylor (Director of Music) Shirley Woods

Activities of the DCC

The DCC met four times during 2013 discussing the life and worship of the church in St James'. During the year its agenda has been structured round the three areas of identified below, and this led to the adoption of a draft Mission Plan at the beginning of 2014.

The life of the Church in the District

At its January 2013 meeting the DCC agreed that there were three themes to its life and work, and that these should form the basis of our exploration of how we might be called to develop our contribution to the life of the wider Church. These are that St James' might be:

- A place of prayer and worship
- A place for visitors to encounter the wonder of God
- A varied community travelling together and growing in faith

2013 has, for the most part, been a period to reflect on how these three aspects of the Church's life might shape us as a church community in the coming years. This process led to the adoption by the DCC of a provisional Mission Plan for the next couple of years at its meeting in January 2014. In the coming years, the DCC is committed to developing each of these areas of our life as a distinctive contribution to the life and mission of the Church across the whole parish. During 2014 key areas for focus will be developing our life of prayer and worship (with particular attention to the role of music) and seeking to grow a deeper sense of fellowship. Moving in to 2015 it is hoped that we can develop an Education Programme to enable young people to engage with the church through school visits, and to celebrate the 500th anniversary of the completion of the spire – using this as a way of celebrating existing connections within the community and sowing the seeds for new ones. The following is a reflection on the life of the church in 2013, focused on those three areas outlined above:

St James' as a place of prayer and worship

In the context of the wider Parish, St James' is the main focus for the routine of prayer that is maintained by the Ministry Team. Members of the Ministry Team gather each weekday for Morning Prayer, where they hold the needs of the town before God and pray for the life of the whole Church as its individual members witness to God's love in so many ways in our world. This rhythm also includes the weekly Sunday Evensong, where the choir bring a distinctive contribution to this round of prayer and worship offered for and on behalf of the whole Church, and the Tuesday communion service which often provides a spiritual focus before or after Ministry Team meetings.

Regular congregational worship has been sustained over the past year and there has been a general trend of increased attendances at all services. In many cases this has seen a recovery to levels of attendance that equal or nearly equal those before the vacancy in 2011/12. There is a clear challenge to the church to grow and nurture new members of the congregation, and deepen the sense of fellowship across all congregations. Some initial work has been done to look at how the wider work of the Ministry Team across the parish could be supplemented by particular work within the worshipping community at St James. Some of the social events that have taken place over the past year are a start in this work, and it is hoped that new ways of fostering fellowship can be explored in the coming year.

As well as being home to a the Sunday and Tuesday congregations, and the prime focus of the rhythm of prayer maintained by the Ministry Team, St James' is a natural focus for the civic ministry of the Church. As such, 2013 has seen St James' host three Civic Services: two for the Town Council and a third for East Lindsey District Council. This civic ministry is also reflected in the hosting of a service for Remembrance Sunday and the town Carol Service in the week before Christmas. Each of these occasions has presented a wonderful opportunity to welcome people from the wider community to a very special place, and invite them to touch the prayer that has hallowed this place over the centuries. St James' also hosted an ecumenical service to mark Bible Sunday at the end of October; a visible sign of our commitment to working together with other members of the wider body of Christ. The occasional Offices (Baptisms, Marriages and Funerals) are another important way that the church serves the spiritual needs of the wider community; they are a very real way in which we help people belong to the body of Christ in the wider community. As well as serving the needs of parishioners, St James' has also been used as a venue for pastoral offices where the natural parish church did not have the required capacity. This has seen at least two funerals and a memorial service take place in the church; a valuable contribution to the work of the wider Church.

Our work with schools has been a further area where we have been able to help nurture people's innate spirituality within the wider community. As part of our regular work with schools across the parish, St. James'

has hosted services for King Edward VI Grammar School, Cordeaux Academy and Kidgate Primary Academy. Our links with each of these schools are growing in their own ways, and serve to broaden the number of people who are touched by the love of Christ; however gentle that seed may be.

Our life of prayer and worship is only possible due to the efforts of several groups of people whose regular contribution is invaluable: our Vergers, the Choir and other involved in our music; the Servers and the Sidesmen, Readers and Intercessors who, along with the clergy and lay readers, make up the broad Ministry Team serving St James' and its people.

St James' as a place to encounter the wonder of God

People from far and near visit St James', and the vast majority find something very special in this place. Our ministry of welcome is an important part of our life and we must be grateful to those volunteers who work so hard to welcome people to the building and explore its heritage. Many of those people visiting St. James' remark on finding a place of prayer or peace. During 2013 a series of small boards were created and placed around the church to help people explore the spiritual significance of parts of the building, and to reflect on central aspects of the Christian faith that we celebrate in the building. This is part of our ministry of welcome that we may well seek to develop further in the future, complementing the valuable work undertaken by our volunteer Guides who are very often the public face of the Church.

The Coffee Shop and Gift Shop have both had good years, with the Coffee Shop setting a new record for takings across the year. We also welcomed the Cards for Good Causes Shop in the run up to Christmas; an activity that brings a welcome sense of activity in the otherwise quiet time between Remembrance and Christmas. Again thanks must be given to the volunteers without whom this work would not be practical.

St James' has also hosted a number of cultural events during the course of the year – ranging from the traditional, classical concerts of the Chamber Choir and Choral Society to the far less formal Party in the Pews. Alongside the other concerts we have hosted and our own lunchtime recitals this makes for a varied contribution to the artistic life of the local community. Over the next year, it is hoped that this will not only continue and develop, but be joined by some exhibitions of visual art.

St James' as home to a varied community travelling together and growing in faith

The St. James's Ladies Guild is a longstanding part of our fellowship programme and continues to meet each month in Church House. This has been joined by a Parent and Toddler Group which meets weekly on a Thursday morning. During the year there have been a number of occasions for people in their 20s/30s to meet socially and this group has grown to include a number of people associated with the church elsewhere (through Messy Church, Baptisms etc.) Toward the end of 2013 a Bible Reading Group started to meet and this has added a further dimension to our life. To support activities in this area of the church's life the DCC is investigating how Church House, Ugate might be developed as a resource.

Looking ahead there is much work we can do to grow the body of Christ in this place; indeed more work is possible than we probably be able to contemplate. In looking at priorities for the coming time, the DCC has identified the following activities that will complement the work of the Ministry Team in the wider parish:

THEME	A place of prayer and worship	A place for visitors to encounter the wonder of God	A varied community gathered together and growing in faith
Objectives	<ul style="list-style-type: none"> ▪ Develop a Choral foundation (in its broadest terms, including musicians, vergers, servers and clergy) that contributes to the regular rhythm of prayer and worship and is ready to cater for the potential demands placed on it by civic and church events. ▪ To seek to build up Civic and Ecumenical links across town and district so that St. James' becomes a natural place for civic celebration. 	<ul style="list-style-type: none"> ▪ Developing a more conscious 'tourism' presence for St. James'. ▪ Investigating ways of developing an educational outreach programme (both to schools and other groups). ▪ Developing the church as a venue for cultural events that 'enrich' people in the broadest terms – with a particular focus on 2015. 	<p>To foster a sense of community across a range of groups that engage people in their spirituality and build a sense of fellowship, including:</p> <ul style="list-style-type: none"> ▪ Sunday morning congregation ▪ Tuesday morning congregation ▪ St. James's Guild ▪ Parents and Toddlers ▪ Bible Reading group ▪ Group for those in their 20s/30s
Work completed/in progress	<ul style="list-style-type: none"> ▪ Daily Prayer resumed. ▪ Updating of Sunday liturgy to include more flexibility – still to be fully developed. ▪ Average attendances up. 	<ul style="list-style-type: none"> ▪ 'Spiritual tour' of the building developed (involving signage and leaflet). ▪ Participation in ELDC promotional activities for the area. ▪ Membership of Visit EL and advertising in the EL Tourism brochure for 2014. 	<ul style="list-style-type: none"> ▪ Ongoing work to nurture and establish groups by the Ministry Team. ▪ Expansion to establish a Pastoral Group within the wider Ministry Team.
Proposed developments	<p>Increase the Music Department to two posts, one of which will be held in combination with a post at KEVIGS. One post would focus on choral and outreach work with schools to build relationships as a foundation for stronger recruitment, whilst it is proposed the other will focus on organ playing, the development of concerts and recitals as part of the overall cultural programme, and the encouragement and training of organists for the future.</p> <p>Aim to make appointment for September 2014, with subsequent development of detailed planning and implementation from that date.</p>	<p>Produce leaflets and poster publicity for the 2014 season, developing a 'tourism brand' for St James' that will sit alongside the existing branding used for parish events in (and associated with) the church.</p> <p><i>The existing group of people involved in our ministry to visitors (Margaret Anderson, Mary Haynes and Stuart Sizer) are the natural people to contribute to this, with the assistance of someone with skills in design/marketing.</i></p> <p>Implement initial publicity in 2014 and develop a more comprehensive plan for 2015.</p> <p>Build on our growing links with schools to establish an Education Outreach programme, seed-funded with the £1,000 donation received in 2013. To include encouraging local schools to use the building as a curriculum resource and increasing the interpretation that we offer to visiting groups.</p> <p>Develop and trial activities during early/mid 2014, with aim of starting pilot programme in the 2014/5 academic year.</p> <p>Host an exhibition of artwork with a religious theme, drawing on the talents of some local artists and linking to other projects beyond the church (e.g. Art Trails etc.).</p> <p>Work to host an exhibition within the ZD Festival 2014.</p> <p>Establish an 'inSPIRE 500' co-ordinating group to engage with other organisations and start planning a programme of events to celebrate the 500th anniversary of the completion of the spire.</p> <p>Establish group from February 2014 to develop and implement plans – reporting to the Rector and DCC.</p>	<p>To allow the development of facilities for existing activities (e.g. Parents and Toddlers) and future development (e.g. Education outreach), commission detailed plans for the reconfiguring of Church House to better use the space, refurbishing the Meeting Room, relocating the Office space and reconfiguring the first floor so that it can be let as living accommodation. The Meeting Room should be refurbished to accommodate the following uses:</p> <ul style="list-style-type: none"> ▪ Church groups, such as Parents and Toddlers ▪ Church use for meetings ▪ Outside organisations (both for community use and as a revenue stream) ▪ A space for use by groups visiting the church as part of the proposed visiting/educational programme <p>Plans to be draw up as soon as possible for consideration/approval by DCC.</p>

Statistics for 2013

	2013	2012	5yr average
Usual Sunday attendance (weekly)	76	64	75
Usual Weekday attendance (weekly)	16	12	-
Christmas attendance	1,302 (675)	853 (683)	1,053 (660)
Christmas communicants	226	239	-
Easter attendance	212	172	-
Easter communicants	142	116	-
Total attendance at services on Sundays and Festivals	7,575	5,565	6,968
Baptisms	16	21	-
Weddings	15	?	-
Funerals	24	22	-

It is pleasing to see that (contrary to the rumours sometimes found in the press about the Church at large) there are signs of growth in St James'. I am confident that if we pray and work together the future of St James' will be exciting and we will see these signs of growth develop into something that will grow in years to come. There will undoubtedly be ups and downs on the way, but I look forward to continuing to travel alongside those who pray and worship here as we discover the ways in which God calls us to be the body of Christ in the years to come.

ANNEX D: Report on the work of the DCC of the Parish Church of All Saints, South Elkington

Members of the DCC and Church Officers within the District serving following the 2013 Annual Meetings

Clergy/Ministers	The Rev'd Nick Brown (from 10 th January 2013) The Rev'd Steve Johnson (from 10 th January 2013) Dr Paul Hill Mrs Ronnie Partridge
Churchwardens	Charles Dobson John Myers
Deanery Synod	Jill Day
PCC member	-

Activities of the DCC

Apart from the Annual District Meeting, there have been no formal meetings of the DCC for South Elkington during the year – the business being conducted by the Churchwardens (with informal consultation with other officers and members of the congregation).

The life of the Church in the District

The regular round of services has continued to take place in All Saints throughout the year, with an increase in attendance being recorded (although numbers for Easter and Christmas showed a drop from previous years). A sense of fellowship has grown more deeply with the encouragement to linger and chat at the end of the service now that Coffee is available. In addition to the monthly services of Matins and Communion, All Saints has been able to witness to people's Christian journey through life through the Occasional Offices (Baptism, Marriage and Funerals), in which there has been an increase. Whilst it is sombre when this means saying farewell to a long-standing member of the community at a funeral, there have been chances to help people celebrate the joy of new birth and committed love. In an important way, All Saints witnesses to the Christian faith of those in the wider community – often welcoming back couples who have been married to mark the birth of a new member of the family. The pattern of worship is completed by mentioning the Harvest Festival and Christmas Carol services – both well attended. We also welcomed Greenwich House School for their services during the year – a link that it is hoped to develop more deeply in the future.

In addition to these aspects of the Church's life there have been the chance to gather more socially during the year; with the Christian Aid Soup Lunch, a Farm Tour (provided by Charles Dobson and followed by Tea) and an All Saints Supper as foci for this aspect of our life.

Statistics for 2013

	2013	2012	5yr average
Usual Sunday attendance (fortnightly)	14	12	-
Christmas attendance	22	40	31
Christmas communicants	19	22	22
Easter attendance	25	43	32
Easter communicants	23	27	27
Total attendance at services on Sundays and Festivals	-	-	-
Baptisms	11	7	-
Weddings	6	-	-
Funerals	4	2	-

ANNEX E: Report on the work of the DCC of the Parish Church of St. Martin, Welton le Wold

Members of the DCC and Church Officers within the District serving following the 2013 Annual Meetings

Clergy/Ministers	The Rev'd Nick Brown (from 10 th January 2013) The Rev'd Steve Johnson (from 10 th January 2013) Dr Paul Hill Mrs Ronnie Partridge Mrs Sylvia Pounds (from 12 th October 2013)
Churchwardens	David Wormell Jim Cave
Deanery Synod	Pru Wormell
PCC member	Peter Taylor (Treasurer) David Dickinson (Secretary)

Activities of the DCC

As well as the Annual District Meeting, members of the DCC met less formally during the year to look at the community which St. Martin's seeks to serve. This informal meeting served to help all involved review of strategic direction; gaining a deeper understanding of the changes that have taken place in the village community over the past few years that are reflected in the life of the church.

The life of the Church in the District

In part as a result of the informal DCC meeting that was held in early summer, St Martin's took part in Macmillan Cancer's 'Big Coffee Morning' project. This event drew people together from both the village and beyond to raise funds for this charity; revealing at the same time how many people have been touched by cancer (either themselves or through the illness of a close relative). Continued reflection is needed on how this wider community focus might be best nurtured in the future.

At the heart of St Martin's life is its regular pattern of worship, with a monthly service of Holy Communion and a monthly mid-morning Morning Prayer. During the course of the year both Easter and Christmas were marked with additional services of Holy Communion, and a Carol Service added to the celebrations of Christmas. There was a more muted marking of the Harvest season.

Since her licensing as a Lay Reader in October 2013, Sylvia Pounds has taken a prominent role in leading worship and preaching at Welton.

Statistics for 2013

	2013	2012	5yr average
Usual Sunday attendance (fortnightly)	7	7	-
Christmas attendance	8	0	-
Christmas communicants	8	0	-
Easter attendance	10	11	-
Easter communicants	10	11	-
Baptisms	0	-	-
Weddings	0	-	-
Funerals	0	0	-

ANNEX F: Report on the work of the DCC of the Parish Church of St. Michael, Louth

Members of the DCC and Church Officers within the District serving following the 2013 Annual Meetings

Clergy/Ministers	The Rev'd Nick Brown (from 10 th January 2013) The Rev'd Steve Johnson (from 10 th January 2013) The Rev'd Robert Mansfield
Churchwardens	Brian Luckwell Maria Vincent
Deanery Synod	-
PCC member	Robert Frankum
DCC members	John Atkinson (Sacristan) Beryl Dunham Sheila Willietts (Verger)

Activities of the DCC

The DCC met on several occasions during the year to transact its normal business. In addition an open meeting was held at the Rectory to seek opinions as to how the church might look forward to the future. As a result of this meeting there have been a couple of developments regarding both the Tuesdays outreach event to young families and the way that the Sunday service is conducted. There has also been some discussion as to how we can use St Michael's Church House to engage with the local community, and we are starting to consult other organisations prior to drawing up proposals and making funding applications.

The life of the Church in the District

The regular routine of Sunday worship has been maintained during the year, with a weekly celebration of the Mass on Sunday mornings. In addition to this, serving as a place for people to gather for the Occasional Offices is an important contribution that St Michael's makes to the work of the Ministry Team in the wider parish. As part of the celebration of the Christian year the following services marked Festivals, complimenting those taking place elsewhere in the parish:

- Candlemas (on the nearest Sunday)
- Ash Wednesday
- Maundy Thursday, Good Friday and Easter
- Michaelmas (Patronal Festival)
- All Saints
- Christmas Carol Service and Midnight Mass

Perhaps the most significant event of the year was our celebration of the 150th anniversary of the church, with a festival weekend at the end of May. After a successful Open Day on the Saturday, people from across the parish were welcome to a service at which the Bishop of Lincoln celebrated and preached.

Tinies Breakfast started during the year and now provides a good point of contact between the Church and young families. It is noticeable how this group feeds from and in to the other groups for young people in the parish. I hope that it will continue to find its place in the life of the parish and be a way in which we can welcome young people to the wider Church family.

In looking at priorities for the future it is clear that the regular celebration of the eucharist and care for those who value the Anglo-Catholic tradition of sacramental worship must be at the heart of St. Michael's life. However, it is also clear

that we also need to look at how to engage with a new generation; though never losing sight of the particular contribution that a sacramental spirituality can bring to this work of reaching out to the local community. As a first step at this, following the open meeting that took place during 2013 the following areas were identified that will complement the work of the Ministry Team in the wider parish:

THEME	A gathered community that celebrates Christ's presence among them, and seeks to take that presence into his world.	A place that is ready to serve the needs of the local neighbourhood.
Objectives	To foster the spirituality of those who attend worship at St Michael's, and encourage the growing of relationships so that this spirituality is shared with those in the wider community. Focused on the following gatherings/acts of worship: <ul style="list-style-type: none"> ▪ Sunday morning congregation ▪ Stations of the Cross (during Lent) ▪ 'Tinies breakfast' 	To develop wider links with the local community, affirming their spirituality, encouraging wholeness of living and building links beyond the gathered church: <ul style="list-style-type: none"> ▪ Pastoral Offices (Baptism, Marriage and Funeral ministry) ▪ Activities hosted by St. Michael's Church House (Playgroup, Humbug Club, Residents Association, Dance School) ▪ The building as a spiritual presence available to all
Work completed/in progress	<ul style="list-style-type: none"> ▪ Revision of the liturgy in line with Common Worship provision, and reinforcing ritual norms of the Catholic tradition of ceremonial. ▪ Addition of morning service of Stations of the Cross during Lent. ▪ Ongoing development of 'Tinies Breakfast' (see next column) 	<ul style="list-style-type: none"> ▪ Tinies breakfast has been established to support those with new-born children/toddlers. This group draws on the immediate local community and wider church-based relationships across the parish.
Proposed developments	<p>Revising the afternoon service on the 1st Sunday of the month to be a more general service of worship, within which Baptisms may be included.</p> <p>Aim to establish a Planning Group to meet during Spring/Summer 2013 to identify how this development might be implemented and how to engage with potential attendees.</p> <p>Explore whether the Stations of the Cross might have a regular (if less frequent) place in the pattern of prayer throughout the year, as well as weekly in Lent.</p> <p>Consult so that a decision can be made after Easter 2014.</p>	<p>Establish a Users Group to consult on the development of Church House, with the twofold aim of supporting the local community and securing the sustainability of this building as a resource for the Church.</p> <p>Aim to have User Group (combining Church and wide community interests) established and consultation under way by late Spring 2014, with initial plans developed during Summer 2014.</p> <p>Explore possible activities to engage with younger people.</p> <p>Initial meeting with interested parties during Spring 2014 to establish the feasibility of supporting a group locally. If viable, aim to start group from September 2014.</p>

Statistics for 2013

	2013	2012	5yr average
Usual Sunday attendance (weekly)	34	30	33
Christmas attendance	182	213	-
Christmas communicants	45	43	-
Easter attendance	58	54	-
Easter communicants	58	54	-
Total attendance at services on Sundays and Festivals	1,685	1,378	-
Baptisms	30	28	-
Weddings	6	-	-
Funerals	17	20	-

ANNEX G: Report on the work of the PCC at Trinity Centre

Members of the Trinity Centre Committee (* indicates those who are also ex-officio members of the residual DCC):

Clergy/Ministers	*The Rev'd Nick Brown (from 10 th January 2013) *The Rev'd Steve Johnson (from 10 th January 2013)
Parish Wardens	*Charles Dobson *Eileen Byrne
Treasurers	Janice Troughton (Trinity Centre) Rob Carr (DCC)
Community Worker	Peta Hill (to 31 st August 2013) Greg Gilbert (from 1 st December 2013)

Statistics for 2013

	2013	2012	5yr average
Usual Sunday attendance (monthly)	16	13	-
Usual Weekday attendance (monthly)	14	10	-
Usual Fresh Expressions attendance (monthly)	57	0	-
Total attendance at services on Sundays and Festivals			-
Baptisms	tbc	-	-
Weddings	0	0	-
Funerals	4	6	-

PROJECT REPORT: Community Larder

Brief description: The Community Larder provides short-term relief for those in immediate practical need. This is largely in terms of food, but extends to other basic necessities (including heating). An important part of the work goes beyond this to provide people with assistance to access further help to transform the situation that has led to them accessing the Larder. This support may be provided either within the broader work of Trinity Centre or by referring to other providers. At its heart the Community Larder responds to the call for us to 'feed the hungry and clothe the naked', and it does so for all in need regardless of creed.

Governance: The Community Larder is administered by a group including representatives from participating churches to whom the Trinity Centre Committee act as custodian trustees on behalf of the PCC. This group has been facilitated by the Community Worker, and operational aspects of the project are undertaken by Trinity Centre staff.

Lead worker: Peta Hill (Community Worker), to 31st Aug. 2013; Jayne Pegg (Projects Co-ordinator), from 1st Sept. 2013

Activities in 2013:

Food distribution

At the heart of the Community Larder is responding in a practical way to the needs of some in our local community by providing necessary essentials. Each parcel is packed with the needs of the individual in mind and, as well as food, often includes other essentials such as toiletries etc. Whilst the need to which we are responding is often obviously temporary, where this is not the case the staff at Trinity Centre seek to find ways of helping transform the situation. Often we are able to do this by referring the individual on to one of the other Centre activities (including the Wednesday Drop-in) but, where necessary, we refer people on to other agencies. The aim is to both respond to the immediate need and to offer a way to relieve any ongoing/underlying issues.

Lincolnshire Community Assistance Scheme (LCAS)

This scheme is run on behalf of the local authority to assist those in immediate need, and forms a place of last resort within the social system. Since early 2013 the Community Larder has been a partner with LCAS who refer people in need to the Community Larder. A payment is received from them both towards the costs of the food parcel concerned and the staff time spent in seeking to find longer term solutions.

Plugging the Gap

Plugging the Gap, a pilot project for those facing fuel poverty, went live in summer 2013 and is a partnership between Community Lincs and the Parish of Louth, funded by the Ebico Trust. As with the food parcels, this scheme aims to provide both immediate help to those in fuel poverty as well as support to resolve the issues that people can face in heating their home.

Promotion and publicity

In May a 'Trolley Dash' took place with members from churches across Louth racing trolleys from Eastgate Union to St James' Church giving out information about and asking people to make contributions to the Larder as they went. As well as collecting a good number of donations, a number of conversations happened with people who either didn't know of the Larder's presence in the town or didn't realise the need that it responded to.

Later in the year, as part of the Louth Food Festival (14 July 2013), Clergy, Trinity Centre Staff and Volunteers manned a stall promoting the work of the Community Larder. Visitors to the stall took part in 'Count the Cans Competition' - a trolley was filled with tins of produce. Over 240 individuals visited the stall throughout the day.

As is normal, there were a great number of contributions from local schools and other organisations around Harvest-time, for which we are grateful, and a good number of visits were made to say a little about the work for the Community Larder and thank them for their gifts.

PROJECT REPORT: Food and Fellowship

Brief description: There are three food and fellowship programmes operating at Trinity Centre – Tasty Tuesdays (on the first Tuesday of most months), Fish on Friday (weekly on a Friday), and Sunday Lunches (on the third Sunday of most months). Each of these programmes is intended to provide a time when people can join together for food and friendship.

Governance: The Food and Fellowship programmes are administered through the Trinity Centre Committee. Each programme is treated as a designated fund within the accounts and each programme makes a contribution to the Centre’s running costs. Staffing is largely by volunteers, though the cooking for Tasty Tuesdays is undertaken by an experienced caterer who is paid for this work. Without the contribution given so willingly by so many these various activities would not be possible.

Lead worker: Polly Aron (to April 2013); Jayne Pegg (from April 2013)

Activities in 2013:

Tasty Tuesdays

This takes place on the 1st Tuesday in the month and has the format of a lunch, following the morning service in the chapel. Volunteers (on a rota) cook and serve a 2 course meal at a cost of £4.

A number of theme lunches were organised throughout the year: Easter, Coronation Lunch, Christmas Party etc., and some intergenerational activities with Lacey Gardens School took place

Fish on Friday

Every Friday, from 10 30am, diners can read the papers and catch up with old and new friends. Fish and Chips are ordered from a local chip shop and served to diners by Volunteers, at a cost of £4. In November we started an exercise class (prior to the lunch) and diners were encouraged to join in.

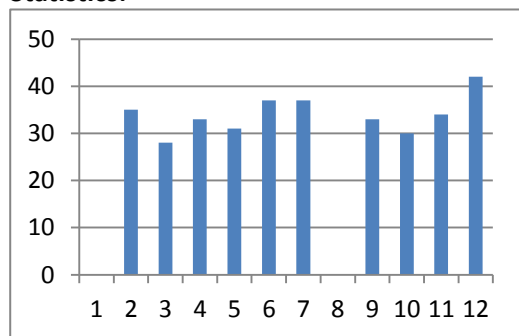
On 13 September 2013 diners enjoyed a lunch out at Woodthorpe Garden Centre. Diners had a couple of hours walking and shopping in the centre and then we sat down and enjoyed a fish and chip lunch.

Sunday Lunches

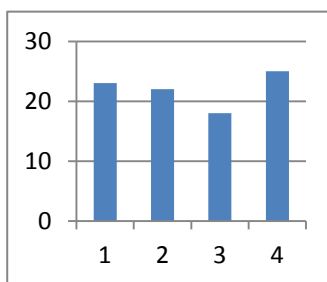
These take place on the 3rd Sunday in the month and, like ‘Tasty Tuesday’, the format is of a lunch following the monthly communion service. Volunteers cook and serve a 2 course meal. This is a popular lunch with over 60 names on the list, and each diner contributes £5 to the cost of the meal.

Having been administered separately in the past, the finances for Sunday Lunches have now been included within the main Trinity Centre accounts (as a designated fund).

Statistics:

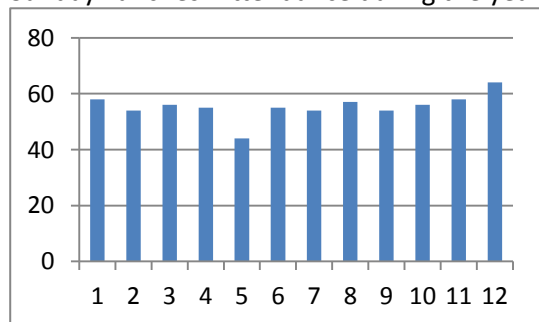


Tasty Tuesday: Attendance during the year



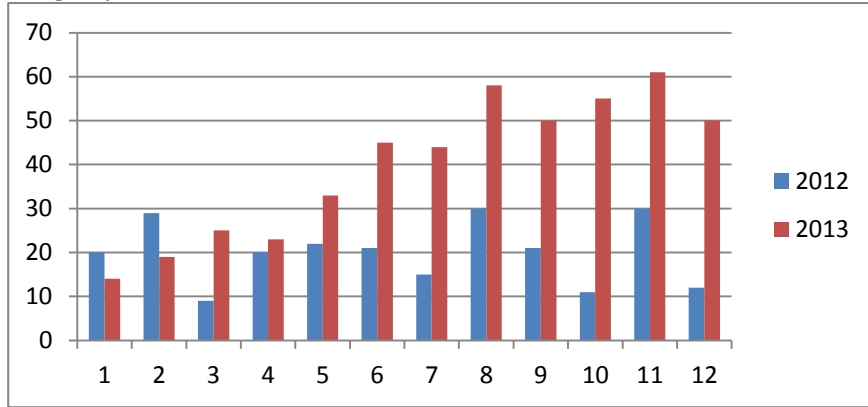
Fish on Friday: Quarterly average attendance at each session

Sunday Lunches: Attendance during the year

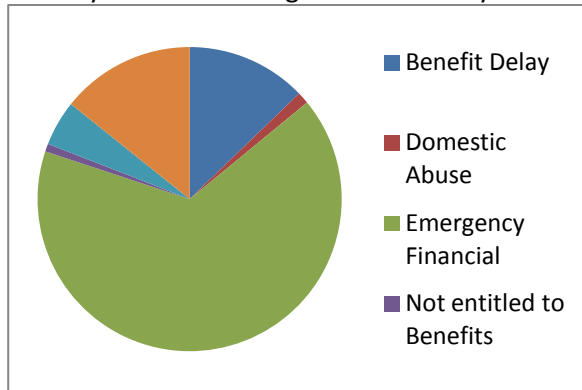


Statistics:

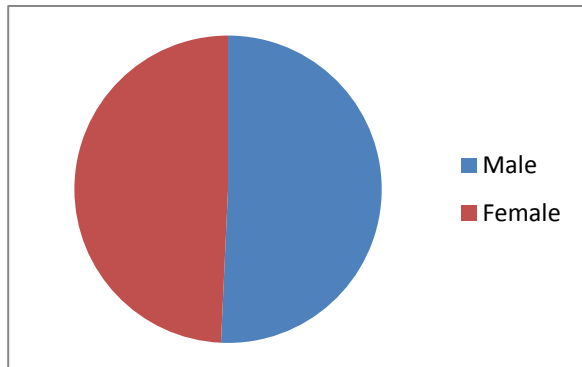
Usage by month



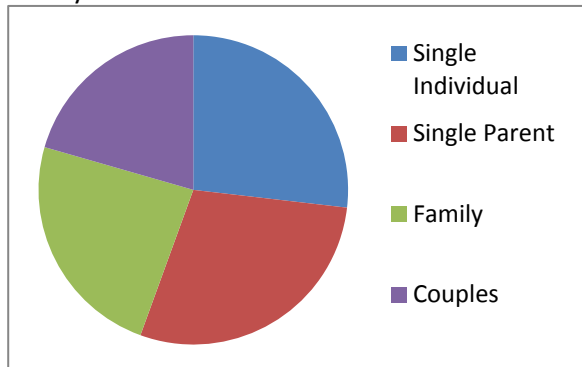
Primary reason for using the Community Larder



Gender of claimant



Family status



Looking to the future:

The Community Larder would not function without the generosity of so many who make a real difference to the lives of those in real need, and 2013 has been a time of immense growth in the demands placed on the Community Larder, particularly in terms of staff time. These are both issues which need to be at the forefront of our minds in the coming year.

PROJECT REPORT: Louth & District Community Bank – the Louth Service Point of the Lincolnshire Credit Union (LincUp)

Brief description:

Governance: The Louth & District Community Bank is formally a service point of the Lincolnshire Credit Union (LincUp) and is managed by their team in Lincoln. There is a local co-ordination group, which also acts as a point of liaison between the Credit Union and Trinity Centre. Since August 2013 Dave Lewis has taken on a greater role – not just in training, but also co-ordinating many aspects of the local operation.

Lead worker: Peta Hill (Community Worker), to 31st Aug. 2013; Greg Gilbert (Community Worker), from 1st Dec. 2013

Activities in 2013: The Louth outlet of the Credit Union has continued to provide a valuable service to users, based at Trinity Centre and complementing the Wednesday Drop-in. During the year a number of new volunteers have joined the rota and there have been investigations into opening a second outlet in the town centre. As well as general promotion of the Credit Union valuable publicity was gained by association with the Archbishop of Canterbury's comments on Credit Unions and, more locally, a project on sustainable borrowing took place at Lacey Gardens School.

Looking to the future: Key areas in the coming months are the practicalities of serving a second service point in the town centre and ensuring that both service points remain sustainable.

PROJECT REPORT: Wednesday Drop-in

Brief description: This session provides a 'one stop shop' for those needing to contact various agencies.

Governance: The Drop-in is run by Trinity Centre with the active help of other agencies.

Lead worker: Polly Aron (to March 2013); Jayne Pegg (from April 2013)

Activities in 2013:

Attendees:

- Credit Union (attend every week)
- Housing Team from ELDC (attend every week)
- Debt Advice - Trinity Centre Volunteer (attend every week)
- Community Volunteer Service (attend every week)
- Health Trainers from ELDC (attend every week)
- Dyslexia Lincs (attend 1st and 4th Wednesday)

Individuals and families are invited to drop-in to receive free and confidential help and advice; no appointment needed. The Drop-in is a popular morning (sometimes hectic) – individuals also accessing the internet, phone and Community Larder. The 'core' Drop-in is complemented by a number of other activities:

A Good Yarn

Started in April 2013. An informal get together of like-minded people who knit, stitch or crochet or who want to learn how to, or be inspired to make new work or who just want to come along to natter. The group is run by Val Truepenny a Trinity Centre Volunteer.

The group have been encouraged to make items for the local community (eg blankets for the ARK, dolls for the Police and crocheted poppies for Remembrance Sunday,

Every Wednesday 10:00hrs – 12:00hrs – Cost £1 – Refreshments provided.

Computer Drop-in & Money Management

Started in June 2013 - Richard from Lincs Training sets up 12 laptops in the Chapel. Individuals use an online course with Richard on-hand for encouragement and problem solving. In the afternoons Richard has run some individual course on subjects requested together with a Money Management Course encouraging individuals to bring in receipts so they can be put onto a spread sheet.

On 16 October 2013 a promotion day was organised and individuals were invited to drop in and meet Richard and discuss computer training etc. This has been a success and we will continue to promote the course to all using the Community Larder.

Can't Cook – Can Cook

East Lindsey Food for Life Team uses the kitchen to promote healthy eating and teach individuals to follow menus. After cooking, attendees sit down and eat what they have made.

This has been a successful project and we intend commencing a 6 week course in January 2014.

